

I WANT TO EXPLORE

i SITE



www.isite.nz

YOUR JOURNEY STARTS AT i-SITE

Expert local knowledge & bookings in 80 locations throughout New Zealand

100% PURE NEW ZEALAND

NORTHLAND

northlandnz.com

- 1 Far North i-SITE (Kaitiaki)**
Te Ahu, Cnr Matthews Ave & South Street, KAITIAKI
(09) 408 9450
- 2 Hokianga i-SITE**
29 State Highway 12, OPONONI, HOKIANGA | (09) 405 8869
- 3 Bay of Islands i-SITE (Paihia)**
The Wharf, Marsden Road, PAIHIA | (09) 402 7345
- 4 Whangarei i-SITE**
92 Otaika Road, WHANGAREI
(09) 438 1079

AUCKLAND

aucklandnz.com

- 5 Warkworth i-SITE**
1 Baxter Street, WARKWORTH
(09) 425 9081
- 6 Auckland i-SITE - Princes Wharf**
Shop 2, Shed 19, 137 Quay Street, Princes Wharf, AUCKLAND
(09) 365 9914
- DOC Tāmaki Makaurau / Auckland Visitor Centre**
(09) 379 6476
- 7 Auckland i-SITE - SKYCITY**
Level P3, SkyCity, Cnr Victoria & Federal Streets, AUCKLAND
(09) 365 9918
- 8 Auckland i-SITE - International Airport Terminal**
Arrivals Hall, International Terminal, Auckland Airport, AUCKLAND | (09) 365 9925

WAIKATO

hamiltonwaikato.com

- 9 Huntly i-SITE**
156 Great South Road, HUNTLY
(07) 828 6406
- 10 Raglan i-SITE**
13 Wainui Road, RAGLAN
(07) 825 0556
- 11 Hamilton i-SITE**
Corner Caro & Alexandra Sts, Garden Place, HAMILTON
(07) 958 5960
- 12 Morrinsville i-SITE**
251 Thames Street, MORRINSVILLE
(07) 889 5575
- 13 Te Aroha i-SITE**
102 Whitaker Street, TE AROHA
(07) 884 8052
- 14 Te Awamutu i-SITE**
1 Gorst Avenue, TE AWAMUTU
(07) 871 3259
- 15 Cambridge i-SITE**
Cnr Queen and Victoria Streets, CAMBRIDGE | (07) 823 3456
- 16 Matamata i-SITE**
45 Broadway, MATAMATA
(07) 888 7260
- 17 Waitomo i-SITE**
21 Waitomo Village Road, WAITOMO CAVES | (07) 878 7640

OTOROHANGA i-SITE

27 Turongo Street, OTOROHANGA
(07) 873 8951

Te Kuiti i-SITE

Rora Street, TE KUITI
(07) 878 8077

Tirau i-SITE

State Highway 1, TIRAU
(07) 883 1202

Tokoroa i-SITE

Leith Place, TOKOROA
(07) 886 8872

THE COROMANDEL / BAY OF PLENTY

thecoromandel.com
bayofplentynz.com
rotoruanz.com

Whitianga i-SITE

66 Albert Street, WHITIANGA
(07) 866 5555

Thames i-SITE

200 Mary Street, THAMES
(07) 868 7284

DOC Kauaeranga Visitor Centre

Kauaeranga Valley Rd, THAMES
(07) 867 9080

Waihi i-SITE

126 Seddon Street, WAIHI
(07) 863 6715

Tauranga i-SITE

95 Willow Street, TAURANGA
(07) 578 8103

Rotorua i-SITE

1167 Fenton Street, ROTORUA
(07) 348 5179

Redwoods i-SITE

Longmile Road, ROTORUA
(07) 348 5179

Whakatane i-SITE

Cnr Quay St & Kakaharoa Drive, WHAKATANE | (07) 306 2030

Opotiki i-SITE

70 Bridge Street, OPOTIKI
(07) 315 3031

Kawerau i-SITE

Plunket Street, KAWERAU
(07) 323 6300

EAST COAST

tairawhitigisborne.co.nz
hawkesbaynz.com

Gisborne i-SITE

209 Grey Street, GISBORNE
(06) 834 1911

Wairoa i-SITE

Cnr SH2 & Queen Street, WAIROA
(06) 838 7440

Napier i-SITE

100 Marine Parade, NAPIER
(06) 834 1911

Hastings i-SITE

Cnr Russell & Heretaunga Street East, HASTINGS | (06) 873 0080

Havelock North i-SITE

Cnr Te Aute & Middle Roads, HAVELOCK NORTH | (06) 877 9600

LAKE TAUPŌ / RUAPEHU

lovetaupo.com
visitruapehu.com

Taupō i-SITE

30 Tongariro Street, TAUPŌ
(07) 376 0027

Taumarunui i-SITE

Railway Stn, Hakiha Street, TAUMARUNUI | (07) 895 7494

Turangī i-SITE

Ngawaka Place, TURANGI
(07) 386 8999

DOC Tongariro National Park Visitor Centre

Whakapapa Village, State Highway 48, MT RUAPEHU
(07) 892 3729

Whakapapa i-SITE (satellite)

(07) 892 3075

Ohakune i-SITE

54 Clyde Street, OHAKUNE
0800 647 483

Waiouru i-SITE

National Army Museum, State Highway 1, WAIOURU
(06) 387 5279

WESTERN NORTH ISLAND

taranaki.info
visitwhanganui.nz
manawatunz.co.nz

New Plymouth i-SITE

Puke Ariki, 65 St Aubyn Street, NEW PLYMOUTH | (06) 759 0897

DOC Taranaki / Egmont National Park Visitor Centre

2879 Egmont Road, NEW PLYMOUTH | (06) 756 0990

DOC Dawson Falls Visitor Centre

Manaia Road, KAPONGA
(027) 443 0248

Stratford i-SITE

Miranda Street, STRATFORD
(06) 765 6708

South Taranaki i-SITE

55 High Street, HAWERA
(06) 278 8599

Whanganui i-SITE

31 Taupo Quay, WHANGANUI
(06) 349 0508

Palmerston North i-SITE

The Square, PALMERSTON NORTH
(06) 350 1922

Tararua i-SITE

45 Vogel Street, WOODVILLE
(06) 376 0217

Foxton i-SITE

Cnr Main & Wharf Streets, FOXTON | (06) 366 0999

Levin i-SITE

Te Takere Centre, 10 Bath Street, LEVIN | (06) 366 0848

WELLINGTON

wellingtonnz.com
wairapanz.com

Kāpiti i-SITE

Mediterranean Foods, Coastlands, PARAPARAUMU | (04) 298 8195

Wellington i-SITE

111 Wakefield Street, WELLINGTON | (04) 802 4860

DOC Pōneke / Wellington Visitor Centre

18 Manners St, WELLINGTON
(04) 384 7770

Upper Hutt i-SITE

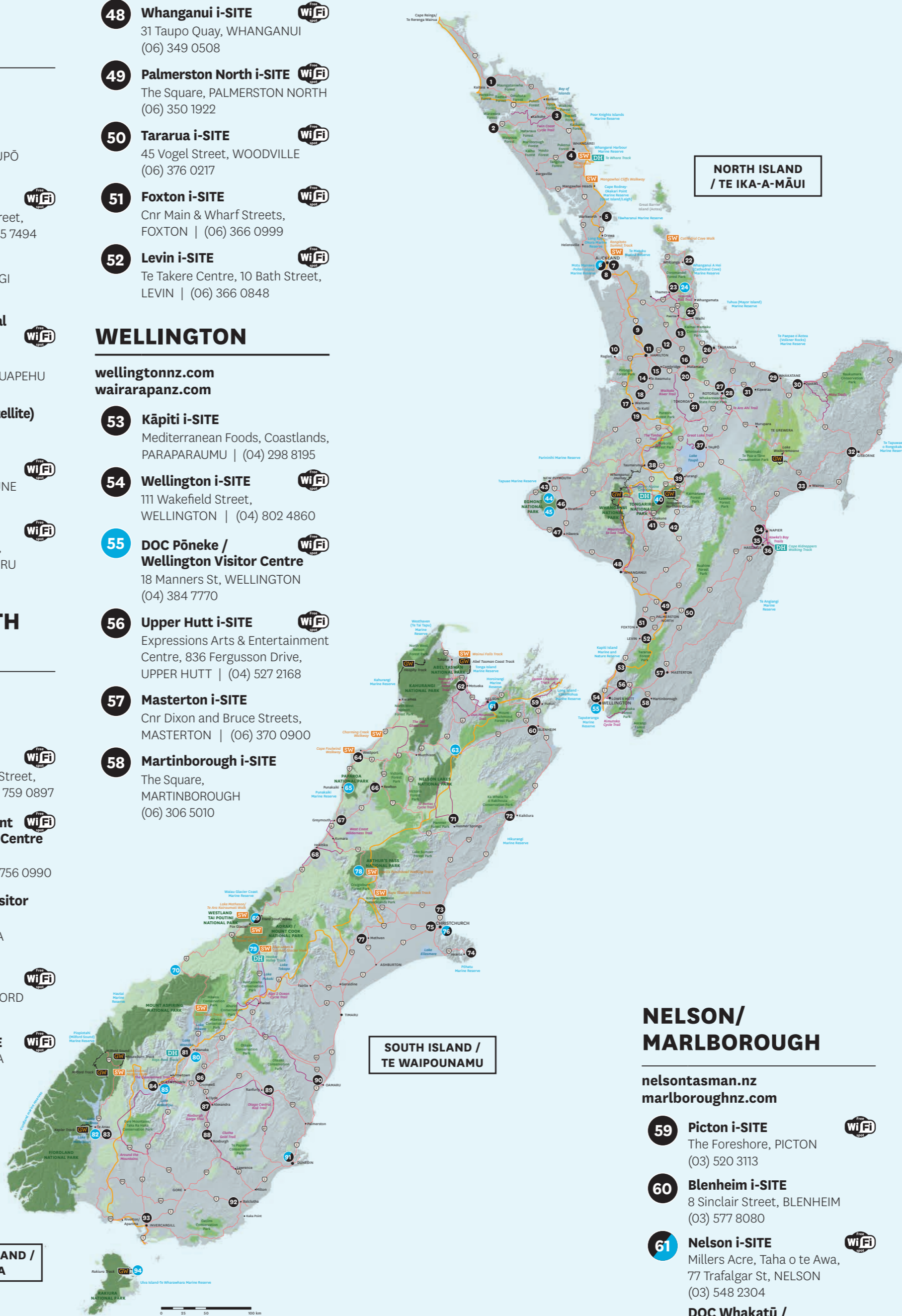
Expressions Arts & Entertainment Centre, 836 Fergusson Drive, UPPER HUTT | (04) 527 2168

Masterton i-SITE

Cnr Dixon and Bruce Streets, MASTERTON | (06) 370 0900

Martinborough i-SITE

The Square, MARTINBOROUGH
(06) 306 5010



NELSON / MARLBOROUGH

nelsontasman.nz
marlboroughnz.com

Picton i-SITE

The Foreshore, PICTON
(03) 520 3113

Blenheim i-SITE

8 Sinclair Street, BLENHEIM
(03) 577 8080

Nelson i-SITE

Millers Acre, Taha o te Awa, 77 Trafalgar St, NELSON
(03) 548 2304

DOC Whakatū / Nelson Visitor Centre

(03) 546 9339

Motueka i-SITE

20 Wallace Street, MOTUEKA
(03) 528 6543

DOC Rototiti / Nelson Lakes Visitor Centre

View Road, ST ARNAUD
(03) 521 1806

CENTRAL OTAGO / SOUTHERN LAKES

lakewanaka.co.nz
queenstownnz.co.nz
fiordland.org.nz
centralotaganz.com

DOC Tititea / Mt Aspiring National Park Visitor Centre

Corner Ardmore Street & Ballentyne Road, WANAKA
(03) 443 7660

Lake Wanaka i-SITE

103 Ardmore Street, WANAKA
(03) 443 1233

DOC Te Rua-o-te-moko / Fiordland National Park Visitor Centre

Lakefront Drive, TE ANAU
(03) 249 7924

Fiordland i-SITE

19 Town Centre, TE ANAU
(03) 249 8900

Queenstown i-SITE

Clocktower building, Cnr Camp & Shotover Streets, QUEENSTOWN
(03) 442 4100

DOC Whakatipu-wai-Māori / Queenstown Visitor Centre

50 Stanley Street, QUEENSTOWN
(03) 442 7935

Cromwell i-SITE

2d The Mall, CROMWELL
(03) 262 7999

Alexandra i-SITE

21 Centennial Avenue, ALEXANDRIA | (03) 262 7999

Roxburgh i-SITE

120 Scotland Street, ROXBURGH
(03) 262 7999

Ranfurly i-SITE

3 Charlemont Street, RANFURLY
(03) 262 7999

OTAGO/SOUTHLAND

waitakinz.com
dunedinnz.com
cluthanz.com
southlandnz.com

Oamaru i-SITE

1 Thames Street, OAMARU
(03) 434 1656

Dunedin i-SITE

DOC Ōtepoti / Dunedin Visitor Centre
50 The Octagon, DUNEDIN
(03) 474 3300

Clutha i-SITE

4 Clyde Street, BALCLUTHA
(03) 418 0388

Invercargill i-SITE

Wachner Place, INVERCARGILL
(03) 211 0895

DOC Rakiura National Park Visitor Centre

15 Main Road, OBAN, STEWART ISLAND,
(03) 219 0009



i-SITE is New Zealand's official visitor information network with over 80 i-SITES nationwide.

i-SITE knows all the best things to do, places to stay and ways to get there. Plus they'll take care of the bookings.

Every person who works at i-SITE is a travel expert for their own home town, so they can help you to find the sorts of activities, attractions, accommodation and transport that only a local would know.

You can be sure that once you have experienced the latest and greatest of what one place has to offer, i-SITE will help connect you with their equally friendly i-SITE colleagues at the next stop on your journey.

So whether you've come around the world or down the road you can rely on i-SITE for expert local knowledge and bookings throughout New Zealand.

- Itinerary planning and information
- Bookings nationwide - accommodation, transport, activities, attractions
- Local information - events, attractions, restaurants & more!
- Many i-SITES offer free Wi-Fi - look for the logo on the map

Most i-SITES are open every day (except Christmas Day). Some i-SITES operate reduced hours. Check www.isite.nz, Google or TripAdvisor for more information.



The Department of Conservation (DOC) looks after a range of unique outdoor experiences, accommodation and recreation facilities on public conservation land.

With a network of more than 960 huts and 230 campsites, DOC also manages a range of accommodation facilities to suit all budgets and tastes.

DOC Visitor Centres

DOC visitor centres are located nationwide and are staffed by DOC rangers who have first-hand, in-depth local knowledge about conservation places and activities. Visit to plan and prepare your outdoor adventures.

Find out about DOC visitor centre opening hours at www.doc.govt.nz/visitorcentres



New Zealand's nine Great Walks are premier tracks that pass through diverse and spectacular scenery. From native forests, lakes and rivers to rugged mountain peaks, deep gorges and vast valleys.

Find out about Great Walks at www.doc.govt.nz/greatwalks

Take a break in the outdoors and get in touch with nature. Short Walks are easy to get to and great for families.

Embark on an adventure in some of the most spectacular landscapes in the world. These Day Hikes are perfect for compact gateways with friends.

Find out about Short Walks at www.doc.govt.nz/shortwalks and Day Hikes at www.doc.govt.nz/dayhikes



New Zealand's Great Rides are an unforgettable way to soak up breathtaking scenery while visiting must-see attractions and discovering hidden gems.

Collectively known as the New Zealand Cycle Trail and spreading from north to south, the Great Rides vary from a leisurely few hours to an epic eight days. Mostly off-road and predominantly easy to intermediate, they traverse a remarkable range of landscapes, from sparkling coastlines to rolling farmland and flinty mountain passes.

There really is something for everyone, with excellent cycling services making things easy. Most Great Rides are accessible from towns and cities where tour guides and shuttle operators offer advice and support including luggage transfers for multi-day trips. Welcoming and atmospheric accommodation, cafés and restaurants provide home comforts along the way.

Every day is a special journey on the NZ Cycle Trail. So what are you waiting for... Start planning your cycling holiday now! Visit www.nzcycletrail.com



Te Araroa is New Zealand's Trail - taking in spectacular New Zealand landscapes from beaches to volcanoes to forests to cities. The 3000km route stretching from Cape Reinga in the North of New Zealand to Bluff in the South.

Te Araroa is the greatest New Zealand adventure there is - walk it all or walk a short section ranging from a few hours to a few days. Visit www.teararoa.org.nz



Qualmark is New Zealand tourism's official quality assurance organisation, providing a trusted guide to iconic travel experiences. Owned by Tourism New Zealand and backed by leading industry organisations, it provides a grading system for accommodation providers and a quality endorsement programme for visitor activities, service and transport providers, as an official mark of quality.

A Trusted Guide to Our Place

The Qualmark logo means you can book with confidence, knowing that the experience is quality assured to the highest standards. Whether you're looking for places to stay, things to do or ways to get around, a business displaying the Qualmark logo represents the best tourism experience New Zealand has to offer.

All Qualmark endorsed visitor accommodation, activities, service and transport providers have been assessed against a stringent framework to recognise the best sustainable tourism businesses in New Zealand, that deliver exceptional experiences as an integral part of everything they do. Tourism businesses are assessed by independent business advisors against the highest standards, and stand out as leading the way in making their experience a world-class visitor destination.

Quality, Safety and Sustainability

Qualmark is a certification that highlights tourism providers who are delivering a quality sustainable experience, who have safe principles and practices, and showcase true New Zealand hospitality. You can book with confidence knowing you'll find a warm welcome from a business that operates in an ethical, professional and environmentally friendly way, protecting what makes New Zealand unique.

Look out for Qualmark qualified businesses across New Zealand that have met and are maintaining the highest quality and safety standards our visitors demand, and are endorsed to carry our official mark of quality.

For more information visit www.qualmark.co.nz



Tiaki means to care for people and place. The Tiaki Promise is a commitment to care for New Zealand, for now and for future generations. New Zealand is precious, and everyone who lives and travels here has a responsibility to look after it.

By following the Tiaki Promise, you are making a commitment to New Zealand. To act as a guardian, protecting and preserving our home.

Nau Mai, Haere Mai Ki Aotearoa, Welcome to New Zealand.

Tiaki Promise

While travelling in New Zealand I will:

- Care for the land, sea and nature, treading lightly and leaving no trace.
- Travel safely, showing care and consideration for all.
- Respect culture, travelling with an open heart and mind



Protect nature



Keep NZ clean



Drive carefully



Be prepared



Show respect

www.tiakinewzealand.com

#TIAKIPROMISE



We want you to stay safe while enjoying the great natural attractions New Zealand has to offer. Here are some websites that provide information to keep you safe.



New Zealand Police

New Zealand is relatively safe but it's not crime free. It is important to keep safe and look after yourself as you would at home. Visit www.police.govt.nz/visitor-guide



YOUR JOURNEY STARTS AT i-SITE

Expert local knowledge & bookings in 80 locations throughout New Zealand

100% PURE NEW ZEALAND

THEMED HIGHWAYS

These routes are marked with distinctive brown road signs. For more information visit: newzealand.com/int/themed-highways

NORTH ISLAND

Twin Coast Discovery Highway: This route begins in Auckland and travels north, tracing both coasts to Cape Reinga and back. Driving is easy and interesting. Highlights include a procession of beautiful beaches, opportunities for fishing, surfing, diving and dolphin encounters; cultural experiences at Waitangi; forest hikes and craft shopping.

Pacific Coast Highway: Linking the Coromandel, Bay of Plenty and Eastland with Auckland in the north and Hawke's Bay in the south, the Pacific Coast Highway takes you to spectacular coastal scenery and beaches, forest wilderness and grape growing districts. This route should go down the Pohutukawa Coast, through Clevedon and around the Firth of Thames. The cities of Tauranga, Gisborne, Napier and Hastings will satisfy your urge to wine, dine and shop.

Thermal Explorer Highway: This route runs between Auckland and Hawke's Bay, travelling through the volcanic centre of the island. You'll have the chance to discover the caves around Waitomo in the Hamilton & Waikato region, geothermal areas in Rotorua and Lake Taupo, the amazing Tongariro National Park and Hawke's Bay Wine Country. Expect equal quantities of relaxation and adventure. When combined, the Pacific Coast Highway and Thermal Explorer are known as The Great New Zealand Touring Route.

Forgotten World Highway: The 150km Forgotten World Highway (State Highway 43) is a memorable driving journey through stunningly scenic untouched landscapes. Following ancient Māori trade routes and 19th century bridle paths, the highway connects Taumarunui to Stratford. The route wriggles its way over four mountain saddles, through an eerie one-way tunnel and along a sinuous river gorge, passing through the unique Republic of Whangamomona.

Volcanic Loop: From the trout town of Turangi, you can circle the volcanoes of Tongariro National Park by following state highways 47, 4, 49 and 1. On a clear day, you'll enjoy spectacular views of the mountains and the volcanic terrain that surrounds them. The stretch known as the 'Desert Road', which cuts across the desolate Rangipo Desert, is particularly memorable.

Surf Highway 45: The 105km highway that traces the Taranaki coast is known as Surf Highway 45 for the countless surf breaks that can be found at the end of almost every road that leads to the coast. The top spots have fascinating names - the Kumara Patch, Graveyards, Secret Spot, and Green Meadows to mention a few, and they are handily punctuated by cosy cafés feeding surfers and adventurers alike.

Wairarapa Scenic Route: A scenic alternative to State Highway One, this route takes you on journeys between the highways through rural landscapes. Discover hidden places and tucked away treasures ranging from country cafés and pubs; heritage sites, galleries and gardens; to scenic reserves, day walks, swimming holes, glow-worm caves, picnic areas, and camping spots. Meet the locals and enjoy world-class scenery from the roadside.

Classic New Zealand Wine Trail: Weaving through three major wine regions, the Classic New Zealand Wine Trail serves up unforgettable wine and food experiences along the 380km route, spanning the North and South Islands. This self-guided drive takes visitors through Hawke's Bay, Wairarapa, and Marlborough, home to some 230 wineries. At the heart of the trail lies Wellington, New Zealand's capital, the perfect place for a culinary and cultural stopover.

SOUTH ISLAND

Alpine Pacific Touring Route: The Alpine Pacific Touring Route takes you to the wine and food experiences of Wairarapa, the spa delights of Hamner Springs and the marine mammal encounters of Kaikoura. Between destinations, you'll enjoy beautiful country scenery.

The Inland Scenic 72 Route: The perfect road journey for travellers who like to get off the main highways and find real rural life. The route starts at Amberley, in the north of the Canterbury region, and runs to Winchester, where it links to State Highway 1. There are fabulous views of the Southern Alps on one side of the road, complemented by the green serenity of the Canterbury Plains on the other.

The Great Alpine Highway: This coast-to-coast route traverses the Southern Alps. From Christchurch, the 255-kilometre route follows State Highway 75 west across river plains before rising to traverse through Porters Pass and Arthur's Pass National Park. Highlights include the impressive Waimakariri and Otira River gorges, driving along the Otira Viaduct and exploring natural wonders like the Castle Hill Rocks and Cave Stream Reserve.

Great Coast Road: The Great Coast Road stretches from Westport down to Kumara. It meanders alongside the ancient limestone cliffs of Paparoa National Park, where the world's smallest penguin resides, through Charleston and down to Punakaiki, home to the famous Pancake Rocks and Blowholes. Driving it in one go only takes about 90 minutes, but it's best to slow down, enjoy the ride and explore some of New Zealand's small towns.

Glacier Highway: The Glacier Highway hugs the coastline from Kumara, through Hokitika and all the way down to Glacier Country. This 300-kilometre journey is surrounded with dense coastal scrub and West Coast rainforest, making it one of New Zealand's most scenic routes. It passes through a national park, seal colonies, beaches, lakes, and as its namesake states, mighty glaciers.

Southern Scenic Route: Starting in the historic city of Dunedin, this route follows the wild southern coast to Invercargill, then continues west and north to Te Anau before ending at Queenstown. Highlights include wildlife encounters along the Catlins coast, the classic motors of Invercargill, cruising Fiordland, walking the Milford Track and the southern local delicacies found throughout.



STEWART ISLAND / RAKIURA

Moutere / Great 1

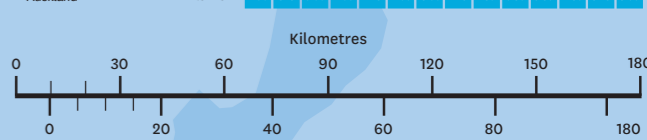
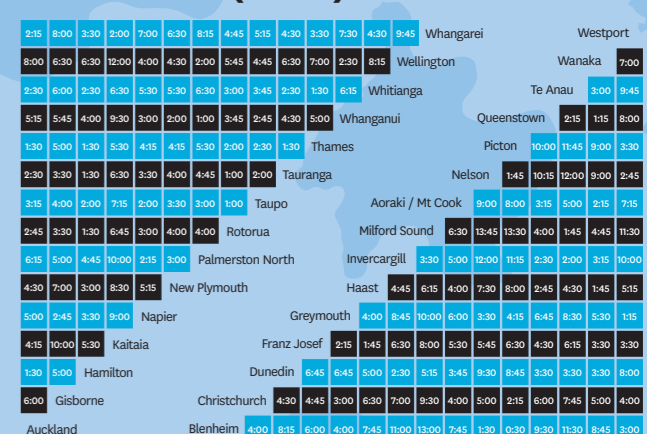


NORTH ISLAND / TE IKA-A-MĀUI



SOUTH ISLAND / TE WAIPOUNAMU

DRIVE TIMES (hours)



- State Highway
- Main Road
- Railway
- Ferry Route
- i-SITE and DOC Visitor Information Centres
- Walks
- Golf Course
- Museum
- Vineyard
- Fishing
- Game Fishing
- Skiing



WELCOME TO NEW ZEALAND

Whether you're planning your New Zealand holiday or simply looking for things to do during your visit - newzealand.com has you covered every step of the way. There, you'll find comprehensive information on everything New Zealand and you can book your flights, accommodation, transport and tours all in one go!

You can also get up to the minute expert advice, traveller tips and exclusive stories about New Zealand daily by joining our social media communities. Find us on Facebook, Twitter or Instagram by searching 'purenewzealand' and start discovering.

facebook.com/purenewzealand

twitter.com/purenewzealand

instagram.com/purenewzealand

With expert local knowledge at 80 locations nationwide, your journey starts at i-SITE.

100% PURE NEW ZEALAND

i SITE
www.isite.nz

100% PURE NEW ZEALAND

i SITE
www.isite.nz

NEW ZEALAND TOURING MAP

i SITE
Department of Conservation
Visitor Information
Open from 9am